



# 4,023 SF Former Bank at Market at Southside

2703 S. Orange Avenue | Orlando, FL

**Jorge Rodriguez, CCIM**  
Executive Managing Director  
+1 407 362 6141  
jorge.rodriguez@colliers.com

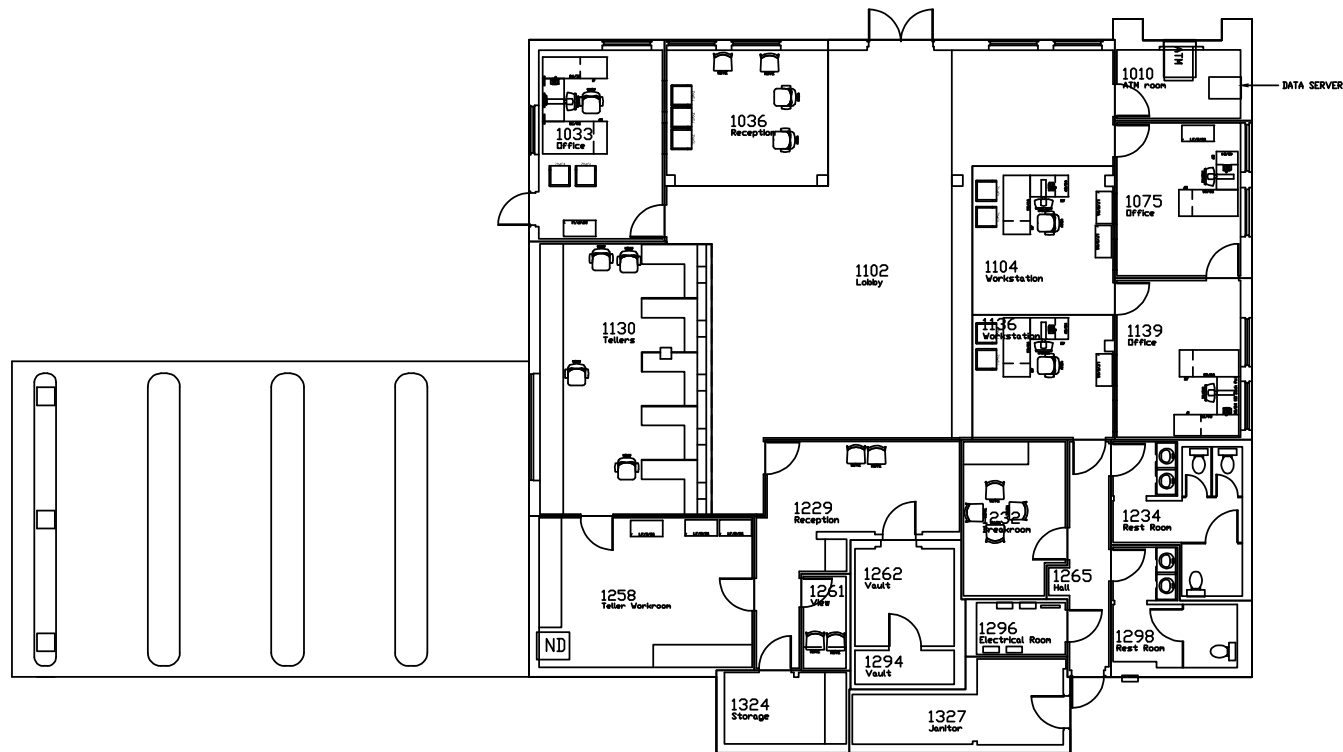
**Chris Alders**  
Senior Associate  
+1 407 362 6142  
chris.alders@colliers.com

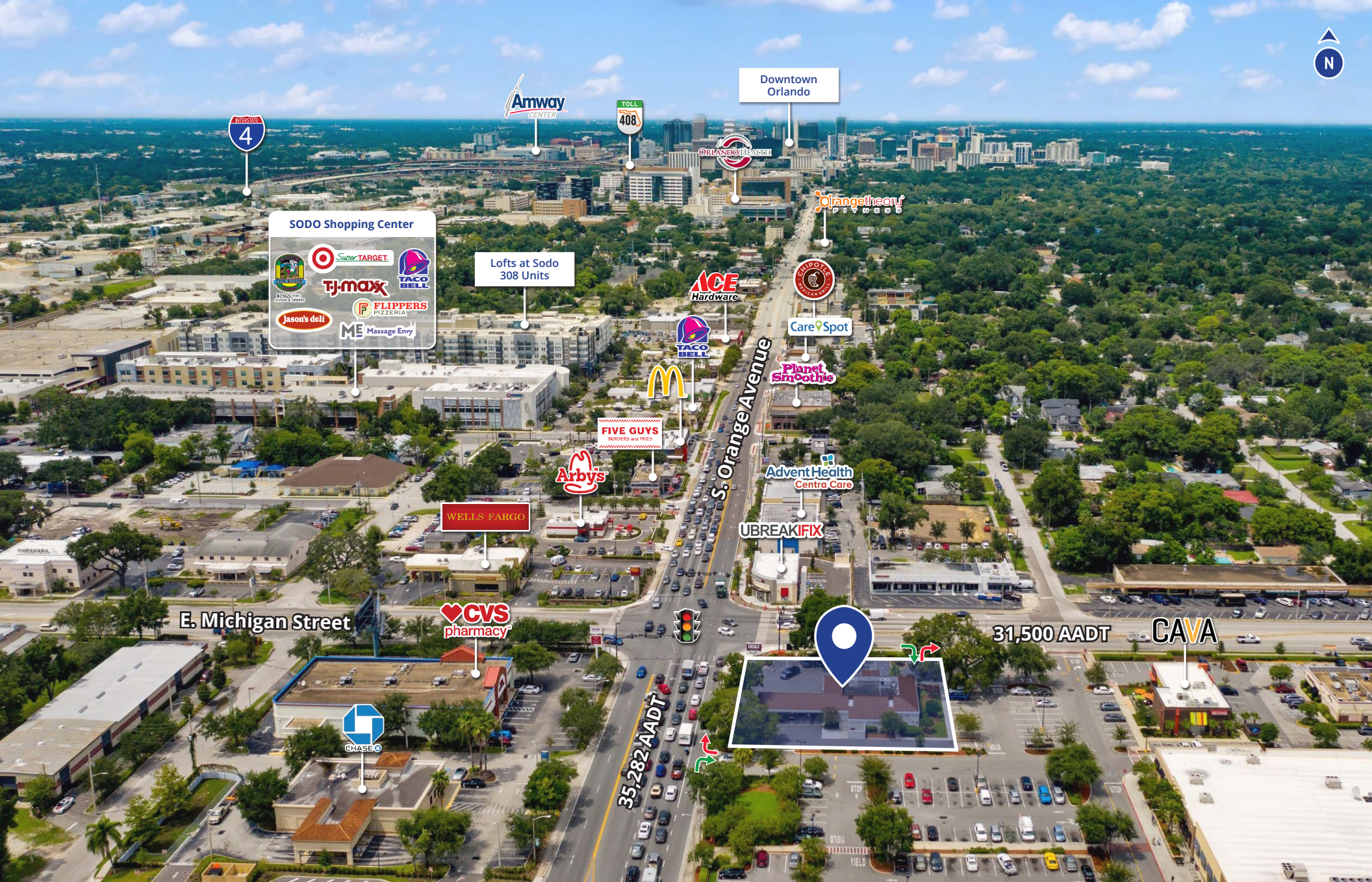


## Property Highlights

- 4,023 SF former bank available for lease
- Building is on 0.60-acres
- Four drive-thru lanes
- 19 parking spaces
- Dedicated pylon signage
- Ideal for bank/retail/medical users
- Frontage along S. Orange Avenue and Michigan Street
- 1/2 mile south of downtown Orlando
- Close proximity to I-4 and SR 408
- Strong daytime population of 181,000+ within 3 miles
- Located south of Orlando Health's main campus with 1,882 beds

## Floor Plan | 4,023 SF





### Population

1-Mile: 9,639  
 3-Mile: 124,248  
 5-Mile: 312,142



### Daytime Population

1-Mile: 36,918  
 3-Mile: 181,358  
 5-Mile: 399,248



### Average HH Income

1-Mile: \$100,105  
 3-Mile: \$75,248  
 5-Mile: \$74,610



### Households

1-Mile: 4,276  
 3-Mile: 53,750  
 5-Mile: 128,276



This document has been prepared by Colliers International for advertising and general information only. Colliers International makes no guarantees, representations or warranties of any kind, expressed or implied, regarding the information including, but not limited to, warranties of content, accuracy and reliability. Any interested party should undertake their own inquiries as to the accuracy of the information. Colliers International excludes unequivocally all inferred or implied terms, conditions and warranties arising out of this document and excludes all liability for loss and damages arising there from. This publication is the copyrighted property of Colliers International and/or its licensor(s). ©2021. All rights reserved.

